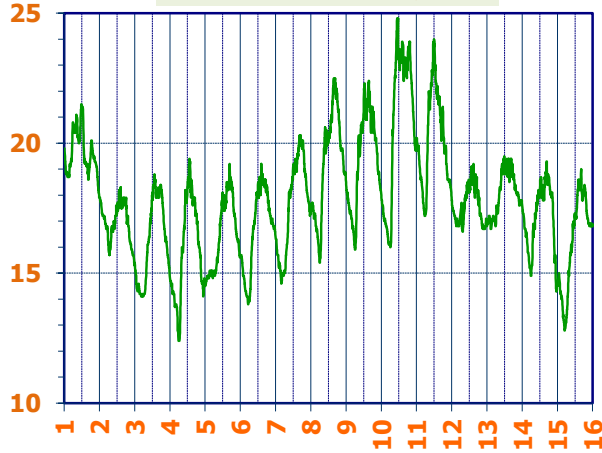
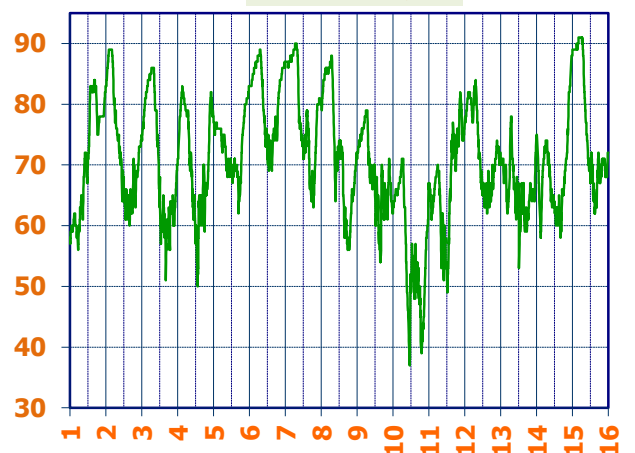




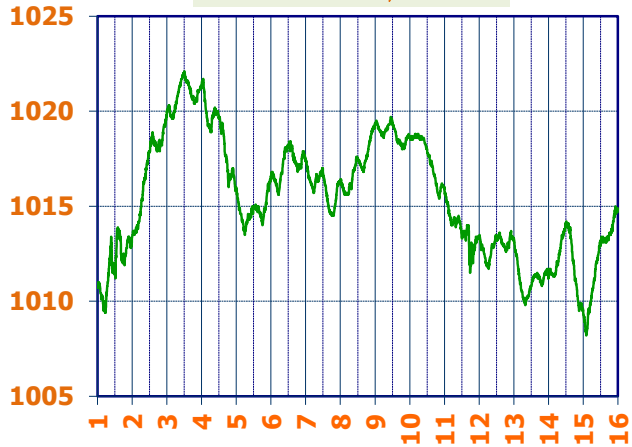
TEMPERATURA, °C



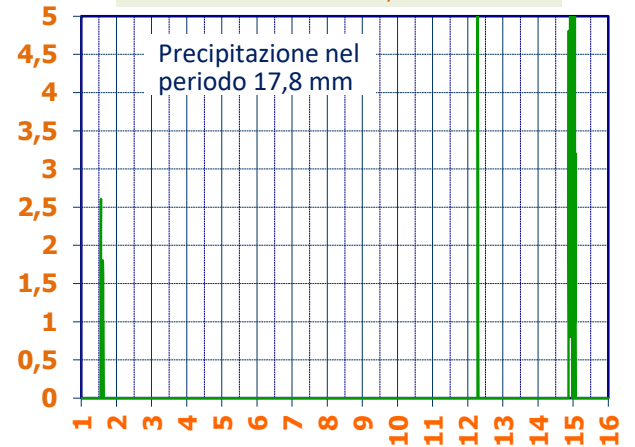
UMIDITA', %



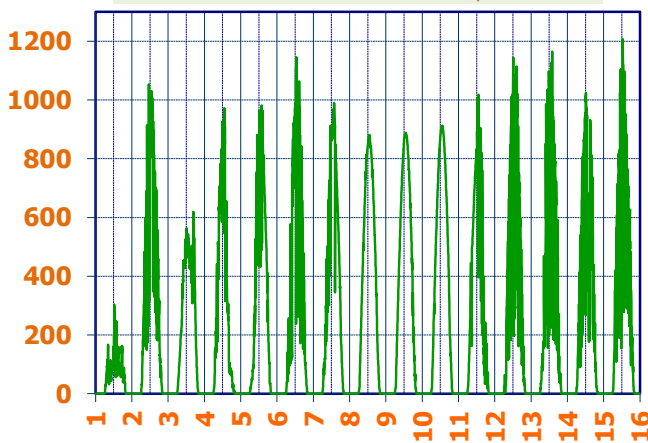
PRESSIONE, mbar



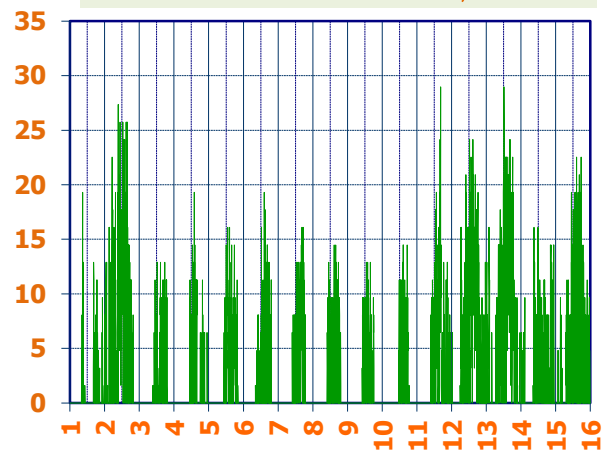
PRECIPITAZIONI, mm/ora



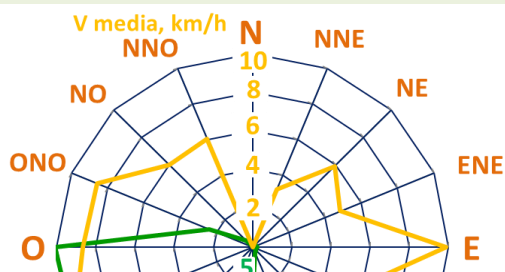
RADIAZIONE SOLARE, W/m²



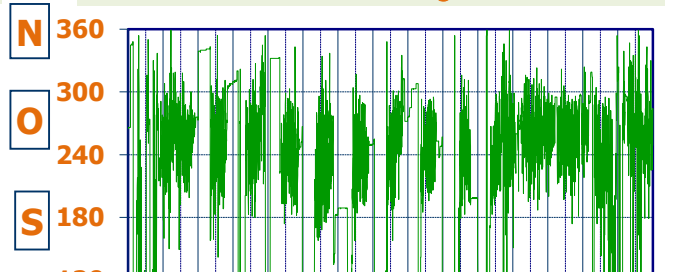
VELOCITA' DEL VENTO, km/h

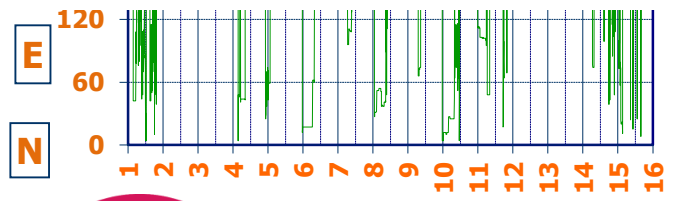
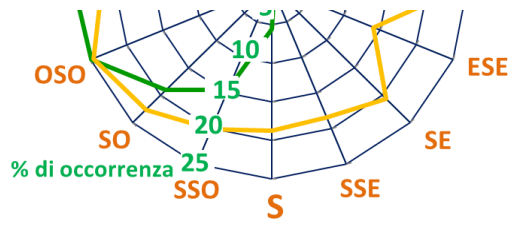


VENTO, GRAFICI POLARI CUMULATI



DIREZIONE DEL VENTO, gradi bussola





A CURA DI:



