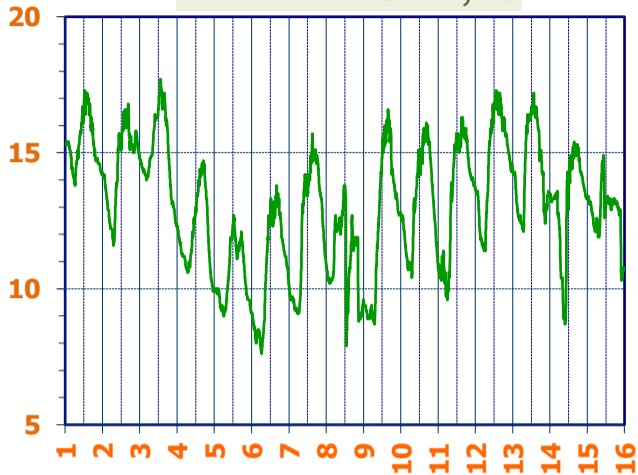
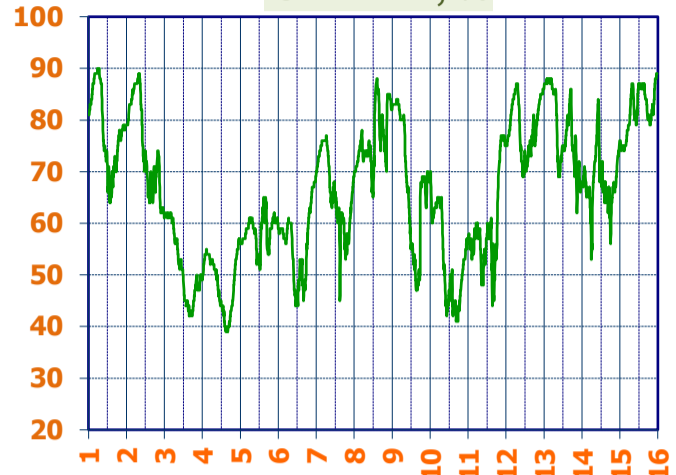


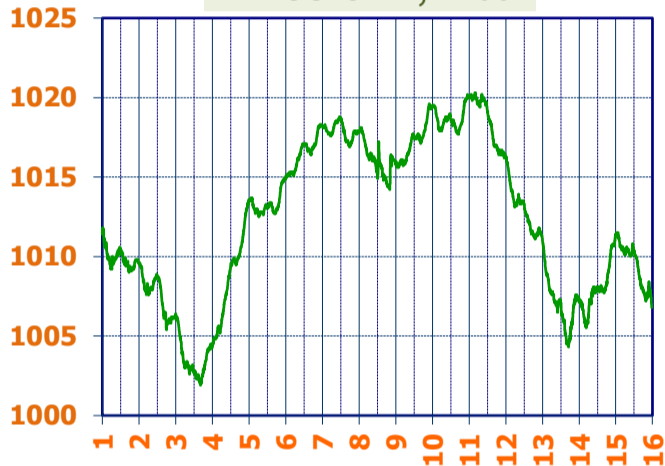
TEMPERATURA, °C



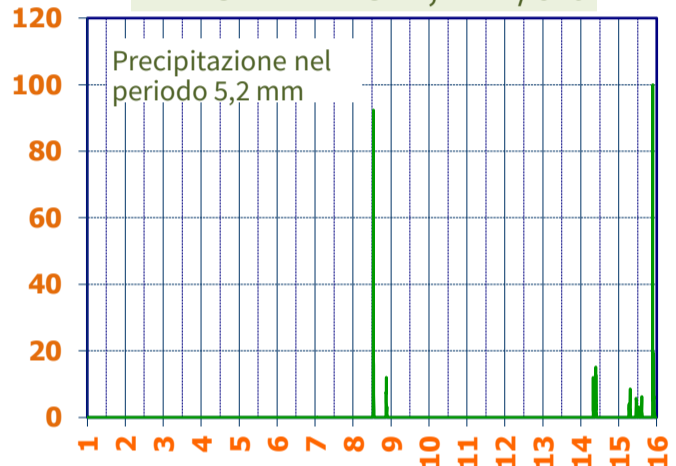
UMIDITA', %



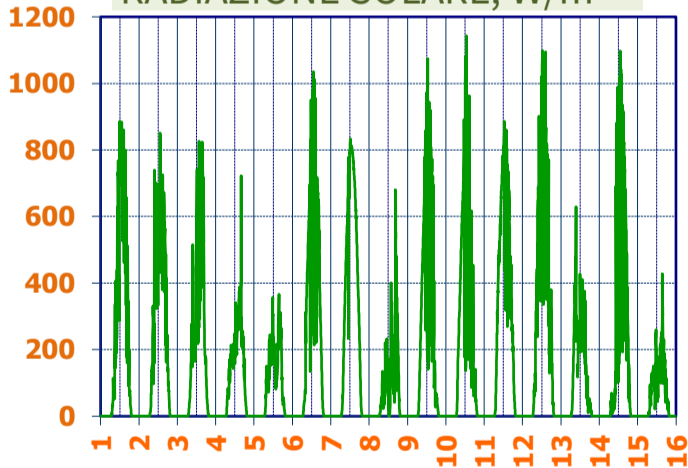
PRESSIONE, mbar



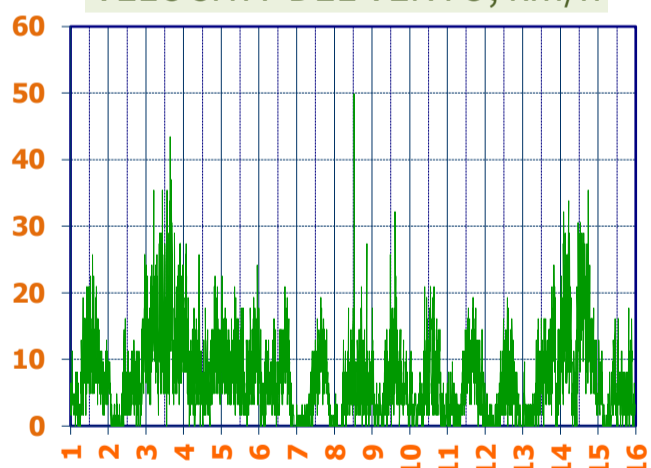
PRECIPITAZIONI, mm/ora



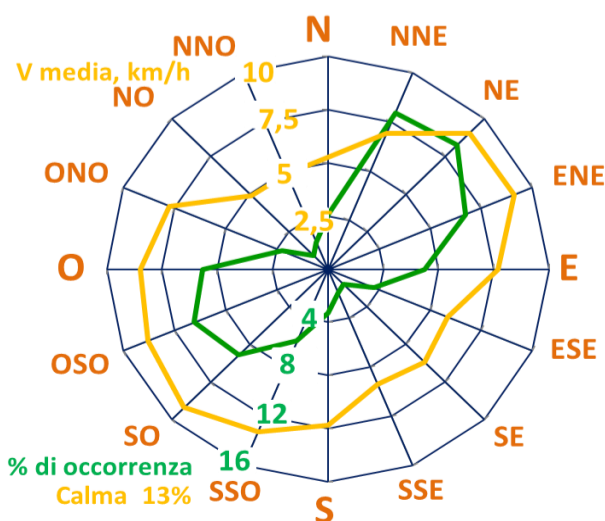
RADIAZIONE SOLARE, W/m<sup>2</sup>



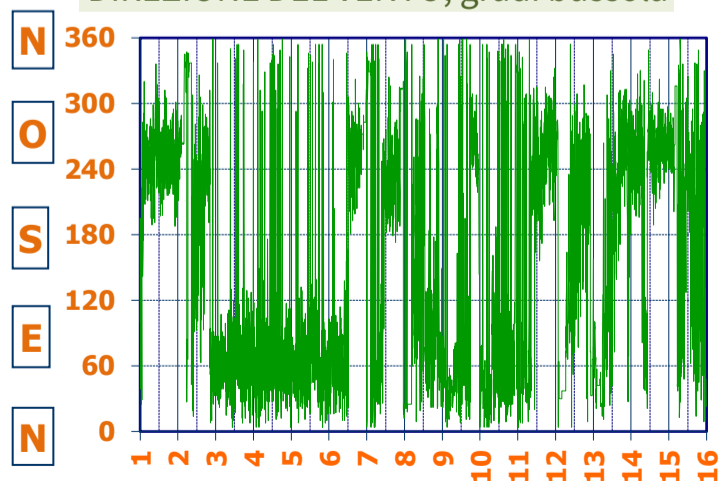
VELOCITA' DEL VENTO, km/h



VENTO, GRAFICI POLARI CUMULATI



DIREZIONE DEL VENTO, gradi bussola



A CURA DI: